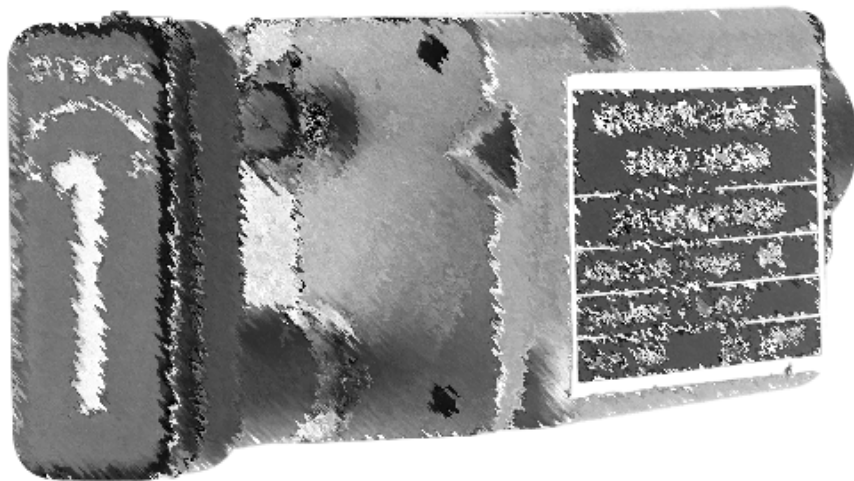


VARIOUS COCKPIT CONTROLS



Included in this section are specialty handles, switches, fire shut off switches and landing gear switches located in the cockpit of commercial and military aircraft.

Some landing gear switches have an electrically released lever lock, with mechanical override in the gear-down position and/or a mechanical lever lock in the gear-up position.

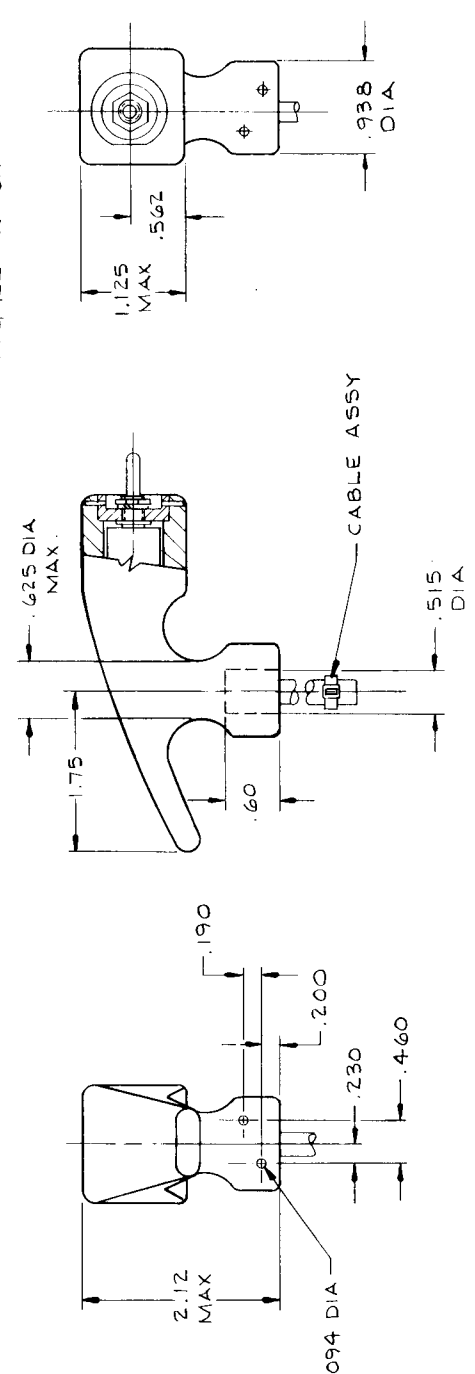
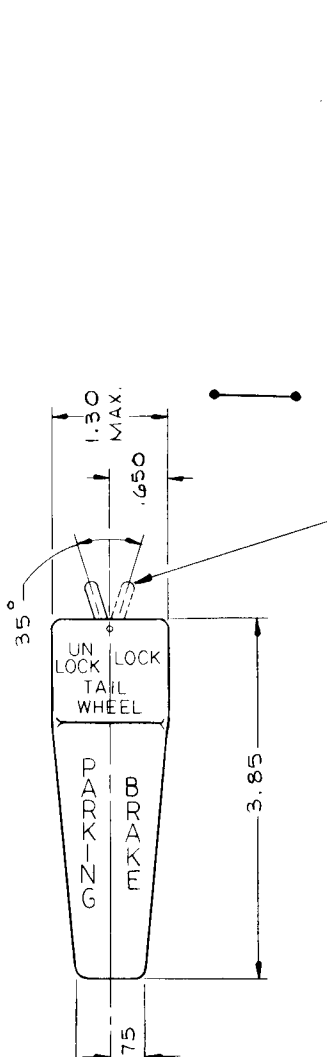
In cockpits where the pilot and co-pilot (or instructor and student) each have a separate landing gear switch, special master and slave units that are linked and move together are used. The master unit contains the operating switches and position locking solenoids, while the slave unit contains only the lever and switches to operate the solenoids in the master. Position tracking is done through aircraft linkage connected to external arms of the master and slave.

Most of these controls have a lighted end or lighted handle. Unlighted portions visible after mounting, are usually flat black, although other colors are available.

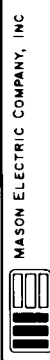
Mounting means are depicted on the individual drawings.

REV STATUS OF SHEETS	
SK	REV
1	
2	
3	

REVISIONS		DATE	APPROVED
SYM	DESCRIPTION		



FIND NO	QTY REQD	CODE IDENT NO	PART OR IDENTIFYING NUMBER	NOMENCLATURE OR DESCRIPTION	NOTE
MATERIALS OR PARTS LIST					
UNLESS OTHERWISE SPECIFIED DIMENSIONS ARE IN INCHES					
TOLERANCES					
DECIMALS ANGLES SURF FNISH					
XX ±.01 ±1°					
XXX ±.005					
HEAT TREAT FINISH					
SYMBOLS PARTS LIST					
△ NOTES □ FIND NO					
PREPARED					
CHECKED					
APPROVED					
SIZE CODE IDENT NO					
C 81579					
SCALE / WT					
SHEET					

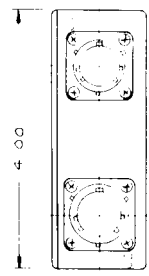
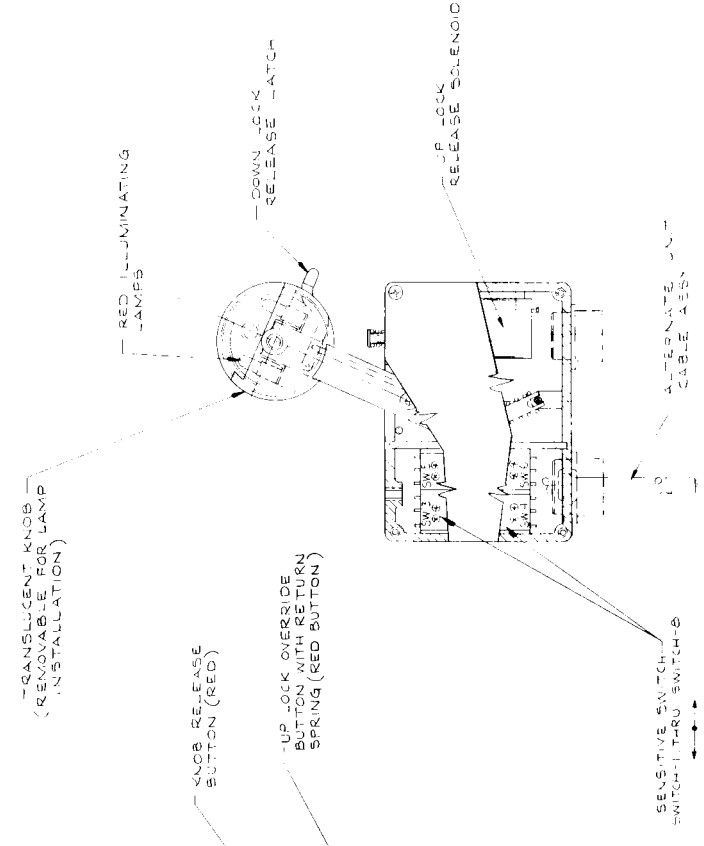
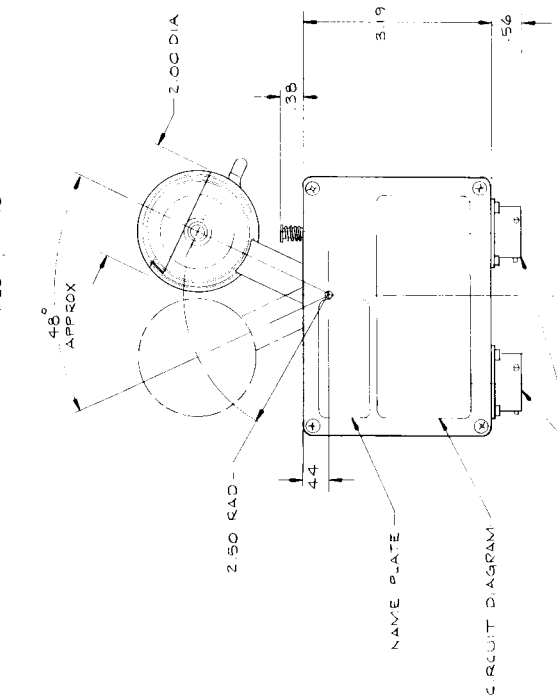
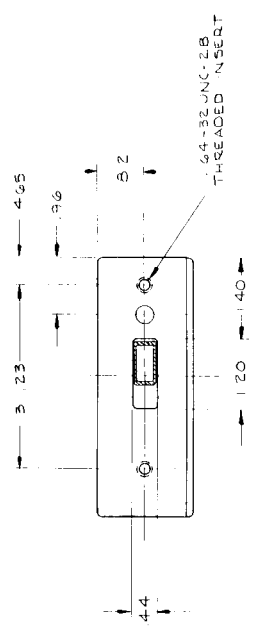


HANDLE ASSEMBLY,
 BRAKE, PARKING

MATERIAL : MOLDED FIBER FILLED THERMOPLASTIC.

2. DIMENSIONS APPLY AFTER PLATING.
 1. REMOVE ALL BURRS AND SHARP EDGES; SPRUE AND ALL FLASH; GATES, FINS AND RISERS.
- NOTES, GENERAL, UNLESS OTHERWISE SPECIFIED AND AS APPLICABLE:

REV. STATUS		REVISIONS	
REV.	DATE	DESCRIPTION	APPROVED
1			
2			
3			



HANDLE SHOWN IN SEEN UP POSITION

MATERIAL: HOUSING ALUMINUM INVESTMENT CASTING WITH REMOVABLE ILLUMINATED HOLED POLYCARBONATE PLASTIC KNOB.

NOTES: SPECIFIC

2 DIMENSIONS APPLY AFTER PLATING.

1 REMOVE ALL BURRS AND SHARP EDGES, SPRUE AND ALL FLASH, GATES, FINS AND RISERS.

NOTES: GENERAL, UNLESS OTHERWISE SPECIFIED AND AS APPLICABLE

REV.	DATE	DESCRIPTION	APPROVED
1			
2			
3			

NO. 1000	REV. NO.	REV. DATE	REV. BY	REV. DATE	REV. BY

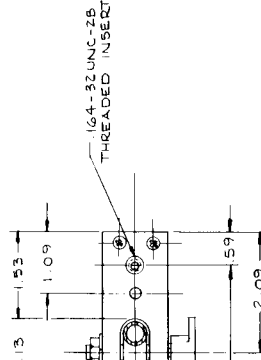
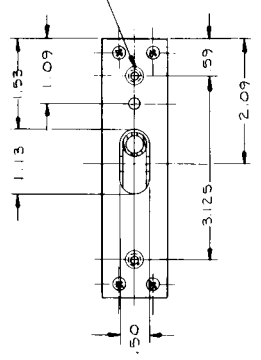
PREPARED	DATE	BY
CHECKED	DATE	BY
APPROVED	DATE	BY

SYMBOLS	DATE	BY
NOTES	DATE	BY

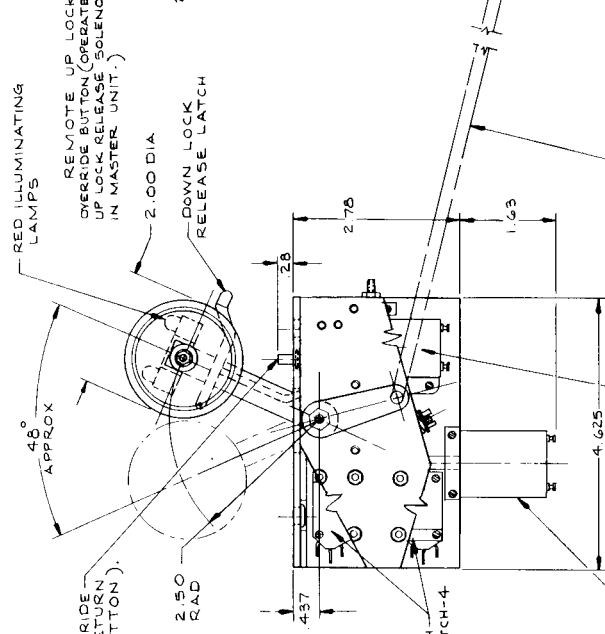
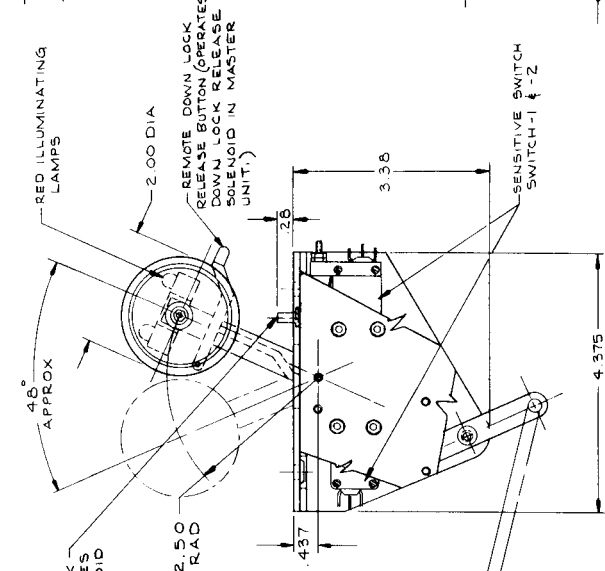
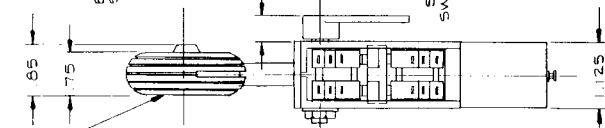
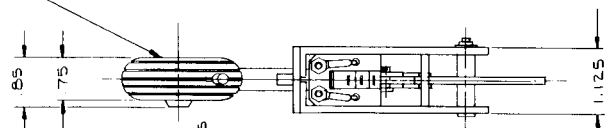
SIZE	CODE	DENT NO.
D	81579	

SCALE	1" = 1"
SHEET	1 OF 1

REV	DATE	DESCRIPTION	APPROVED	BY	DATE
1					
2					
3					



TRANSLUCENT KNOB
(REMOVABLE FOR LAMP
INSTALLATION.)



SLAVE UNIT

MASTER UNIT

FIND QTY	CODE	PART OR	NOMENCLATURE OR DESCRIPTION	NOTE
NO	IDENT NO	IDENTIFYING NUMBER		
			MATERIALS OF PARTS LIST	
			MASON ELECTRIC COMPANY, INC	
			SWITCH, LANDING	
			GEAR CONTROL	
			SIZE CODE IDENT NO	
			D181579	
			SCALE	
			1/8"	
			SHEET	

HANDLE SHOWN IN
GEAR UP POSITION

MATERIAL : ALUMINUM HOUSING WITH
REMOVABLE ILLUMINATED
MOLDED POLYCARBONATE
PLASTIC KNOB.

NOTES: SPECIFIC

2. DIMENSIONS APPLY AFTER PLATING
3. DIMENSIONS APPLY TO ALL FLASH, GATES, FINS AND RISERS
NOTES: GENERAL, UNLESS OTHERWISE SPECIFIED AND AS APPLICABLE: